

SHOES COLLECTION

PURE ITALIAN DESIGN



U-Power[®]

Don't worry... be happy!


Türkiye



DON'T WORRY... BE HAPPY

We like to think that every day can be the start of something wonderful. A new challenge, a new opportunity, an unforeseen situation that tests us and allows us to show all our talent. We believe that positive thinking is not an illusion but a concrete way to face life with a smile, self-confident of our abilities. Here is the explanation of our reasoning, which for me is a philosophy of life: Don't worry... be happy!

Franco Uzzeni
President



OUR SOUL

Headquarters



A HISTORY MADE OF CHALLENGES.

Our philosophy Don't worry... be happy! reflects our Mission, which has always been our commitment to those who wear **U-POWER**: each shoe is a guarantee of true comfort and functionality under the sign of true Italian design.

U-POWER was founded with the target to build the most authentic and reliable reference point for improving the quality and life style of working people.



Modern production establishments



OUR TECHNOLOGY

U-POWER TECHNOLOGICAL SUPREMACY

Consistent with its mission, U-POWER addresses a great part of its investments to the development of each technological innovation which improves every day life for working people by supporting their safety.

Discover the **VALUE**
and **PERFORMANCE**
of a series of
exclusive world
patents.

OUR TECHNOLOGY

wingtex
Air tunnel lining

Waterproof and breathable membrane



LYCRA®

Quick fastening system

BOA®
Fit System

StressOut®
SYSTEM

Tongue which cushions the instep and allows walking comfort, without added stress to the foot

SafetySTRIP

Rubber Strip for improved comfort and protection

Airtoe®
COMPOSITE

Airtoe®
ALUMINIUM

Toe cap which allows feet to breath

ERGODRY

WHITE ERGODRY

ACTIONdry

HEATout

executive plus

Infinergy

leather.gel

Seam



Anatomic footbeds

Save & Flex plus

"No metal"
pierce-resistant midsole

Insert

CORDURA®
FABRIC

PU Tek PLUS*
HYPERTEX technology

PU Tek SPIDER
REPEL
HYPERTEX technology

PU Tek HD
HYPERTEX technology

PU Tek STAR
HYPERTEX technology

Natural
CONFORT 9®

Natural
CONFORT 11®

Anatomic last
Natural Confort 11

OUR TECHNOLOGY

Save & Flex[®] plus

The exclusive pierce-resistant “no-metal” midsole, in comparison to the classical steel midsole is lighter, more flexible and safe since it can be directly stitched to the upper, therefore protecting the entire sole area.

U-POWER uses for its products only **Save & Flex PLUS** quality materials, which offer pierce resistance of the sole **1100N**, in accordance to recent legislation



Insole
SAVE&FLEX PLUS



NORM 1100 N

USED IN U-POWER SHOES

Stress Out[®] SYSTEM

An innovative tongue system planned to help the instep and allow comfort when walking, without added stress to the foot. This exclusive technology comes from extended studies on the ergonomics of the feet.

It concerns the division of the anatomic support combined with a multiple density cushion support inserted in the tongue.

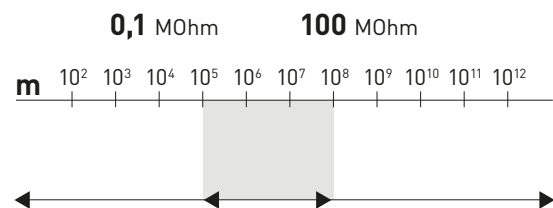


WORLDWIDE PATENT

Stress-out System




ESD CEI EN 61340-5-1
ELECTRICAL RESISTANCE BETWEEN
0,1 AND 100 MOhm



The examined specimen meets the requirements of CEI EN 61340-5-1:2016/ COR1:2017, IEC 61340-4- 5:2018 and IEC 61340-4-3:2018 with regard to the requirements for specific ESD protection elements of electronic components (scope related to the manufacture and use of electronic devices). components (scope related to the manufacture and use of electronic devices).

OUR TECHNOLOGY

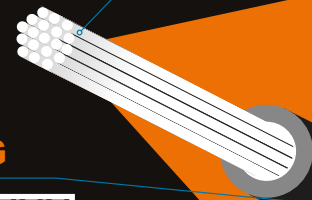


PU Tek® technology
HYPERTEX

Just touch it to feel it is tough!!

PU Tek technology use a new concept of threads with super high resistance to abrasion, directly woven in high resistance fabric to achieve textiles with ultimate mechanical performances!

**HIGH TENACITY
POLYESTER CORE**



**EXTERNAL
PU COATING**

PU Tek Plus
HYPERTEX technology

AS STRONG AS AN ARMADILLO SKIN

ABRASION RESISTANT | HIGHER BREATHABILITY | PVC FREE | DURABLE | FLEXIBLE

PU Tek Plus
is exclusive to
U-Group

*Testing in accordance with the ISO 20344:11 standard showed a much greater breathability than the minimum required and 4 times higher than normal PU Tek for S3 safety footwear.

PU Tek SPIDER
REPET
HYPERTEX technology

AS STRONG AS AN ARMADILLO SKIN

RECYCLED SUPPLY CHAIN | ABRASION RESISTANT | HIGHER BREATHABILITY | PVC FREE | DURABLE | FLEXIBLE | RECYCLED | REINFORCED

PU Tek SPIDER
is exclusive to
U-Group

*Testing in accordance with the ISO 20344:11 standard showed a much greater breathability than the minimum required and 4 times higher than normal PU Tek for S3 safety footwear.

PU Tek HD
HYPERTEX technology

AS STRONG AS AN ARMADILLO SKIN

ABRASION RESISTANT | HIGHER BREATHABILITY | LIGHTWEIGHT | FLEXIBLE | DURABLE | HD | PVC FREE

PU Tek HD
is exclusive to
U-Group

*Testing in accordance with the ISO 20344:11 standard showed a much greater breathability than the minimum required and 4 times higher than normal PU Tek for S3 safety footwear.

PU Tek STAR
HYPERTEX technology

AS STRONG AS AN ARMADILLO SKIN

ABRASION RESISTANT | HIGHER BREATHABILITY | PVC FREE | DURABLE | FLEXIBLE

*Testing in accordance with the ISO 20344:11 standard showed a much greater breathability than the minimum required and 4 times higher than normal PU Tek for S3 safety footwear.



TEST ABRASION RESISTANCE ON SANDPAPER NORM EN 388

FABRIC QUALITY	ABRASION RESISTANCE EN 388	PERMEABILITY OF WATER VAPOUR norm* ≥ 0,8	COEFFICIENT OF WATER VAPOUR norm* ≥ 15
Cordura® 1000	600 cycle	> 10 mg	> 20 mg/cm ²
PU Tek® Plus	> 6.000 cycle	> 20,0 mg	> 120 mg/cm ²
PU Tek® SPIDER repet	3.000 cycle	> 1,0 mg	> 15 mg/cm ²
PU Tek® HD	> 5.000 cycle	> 1,5 mg	> 15 mg/cm ²
PU Tek® STAR	> 6.000 cycle	> 25,0 mg	> 200 mg/cm ²

*minimum values required by the standard EN ISO 20344-2011





Delivering fit solutions purpose-built for performance, the **BOA® Fit System** is featured in products across industries (in medical, sports and workwear) and consists of three integral parts: a micro-adjustable dial, a super-strong lightweight lace and low friction lace guides.

Each unique configuration is engineered for effortless precision delivering a connected, fast, customized and durable fit, and is backed by The **BOA Guarantee**.



REDEFINING THE FUTURE OF FIT.

AGILITY AND SPEED

The **BOA® Fit System** enables faster, more powerful directional changes through a seamless connection between equipment and body.

POWER AND PRECISION

Power without compromising precision, the **BOA® Fit System** delivers more explosive action and unparalleled accuracy.

ENDURANCE AND HEALTH

Go further, faster, and stronger. The **BOA® Fit System** saves energy by improving circulation and efficiency.

DURABILITY AND QUALITY

Engineered with high quality, durable materials, and rigorously field tested, the **BOA® Fit System** is guaranteed to perform in any environment.

FIT FOR LIFE WITH BOA®.

THE BOA® GUARANTEE

The **BOA® Fit System** dials and laces are guaranteed for the lifetime of the product on which they are integrated.

HOW IT WORKS



PUSH
IN TO
ENGAGE



TURN
TO
TIGHTEN



PULL UP
FOR QUICK
RELEASE

OUR TECHNOLOGY

Natural CONFORT 11®



ACTIVITY DAY START ACTIVITY DAY FINISH

Developed from detailed analysis of the foot based upon its maximum efforts and strengths we developed the **Natural Confort 11** last. We know now that during the different phases of the working day our feet can have variations that are very relevant.

Natural Confort 11 ensures a stress-free fitting and natural comfort throughout the day.

Airtoe® ALUMINIUM

The revolutionary composite toe cap which, thanks to the innovative technology **AirToe** allows your feet to breathe. **AirToe** Composite, thanks to the asymmetric holes and the unique micro-porous membrane ensures the total permeability and absolute transpiration even after many hours of intensive wear. **AirToe** Composite complies with the latest safety standards.

Airtoe® ALUMINIUM



Aluminium's nobility and lightness for comfort without compromise
AIRTOE ALUMINIUM
Average weight 54 gr

Airtoe® COMPOSITE



Composite's versatility
AIRTOE COMPOSITE
Average weight 50 gr



STEEL TOE CAP
Average weight 93 gr



**HONEYCOMB
STRUCTURE**

wingtex®

Revolutionary air tunnel lining, for utmost breathability. Special microcells have great absorbance and deabsorbance features.

OUR TECHNOLOGY



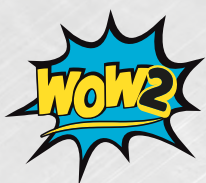
BASF
We create chemistry

An arch structure in SOFT DYNAMIC COMPOUND, with self-modelling properties capable of evenly distributing the pressure of the bodyweight on the foot.



BASF
We create chemistry

An arch structure in SOFT DYNAMIC COMPOUND, with self-modelling properties capable of evenly distributing the pressure of the bodyweight on the foot with a soft anti-shock gel.



BASF
We create chemistry

The **WOW2** insole consists of two elements:

-An arch structure in SOFT DYNAMIC COMPOUND, with self-modelling properties capable of evenly distributing the pressure of the bodyweight on the foot.

-An insert made with a revolutionary BASF compound that guarantees anti-fatigue properties, able to absorb and relieve body stress caused by a prolonged stationary position at fixed workstations.

The result is a feeling of immediate benefit from the first wear of the shoe, which translates into less daily fatigue during the working day.



BASF
We create chemistry

The insole consists of two elements:

-An arch structure **100% renewably sourced PU footbed by BASF** with self-modelling properties capable of evenly distributing the pressure of the bodyweight on the foot.

-An insert made with a revolutionary BASF compound that guarantees anti-fatigue properties, able to absorb and relieve body stress caused by a prolonged stationary position at fixed workstations.

The result is a feeling of immediate benefit from the first wear of the shoe, which translates into less daily fatigue during the working day.



OUR TECHNOLOGY



Anatomic insole designed by studying the morphology of the foot, is manufactured with a dual PE and EVA support system coated with a textile surface. Extremely comfortable, anti bacterial and anti-static, insole, for always cool and fresh feet.



Using our footwear experience, we have developed a footbed that ensures comfort all day long. It combines a support in EVA with open cells textile which keeps it dry and antifungal. Extremely light and non slip, it guarantees maximum performance even in extreme working environments.



Anatomic, removable and lightweight insole in EVA with carbon fibres and ceramic particles, thanks to which the temperature of the foot remains constant even with high ground temperatures.



Anatomic insole very soft with open microcells, light and breathable. Thanks to the pairing with an extremely light material it ensures fresh and dry feet throughout the workday.



Exclusive insole in real leather with EVA support, thanks to the special tanning procedure it is anti bacterial. After lengthy study of the foot's anatomy, this insole offers great side support to your heel, the special gel insert assure shock absorption generated during working activity. An insole which assures fresh and dry feet, even after many working hours.





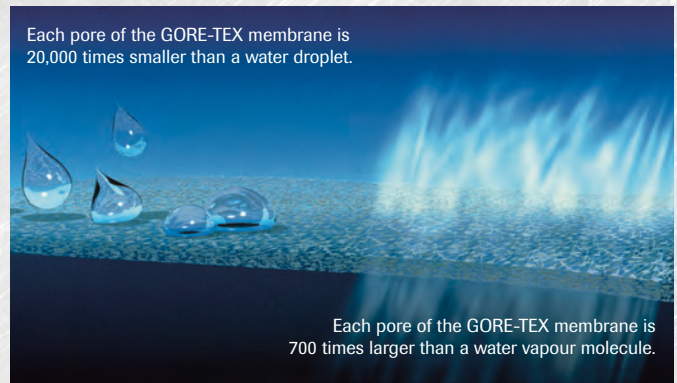
GORETEX FOOTWEAR FOR THE WORKPLACE. PROTECTION AND COMFORT.

High climate comfort

The GORE-TEX membrane – the hidden secret at the core of GORE-TEX Footwear offers high climate comfort in all working weather conditions.

Water stays out while sweat escapes

The GORE-TEX membrane has microscopic pores 20,000 times smaller than a drop of water but 700 times larger than one water vapour molecule. This unique combination provides durable waterproofness and high breathability. GORE-TEX Footwear keep your feet dry and comfortable.



PRODUCT CLASSES.

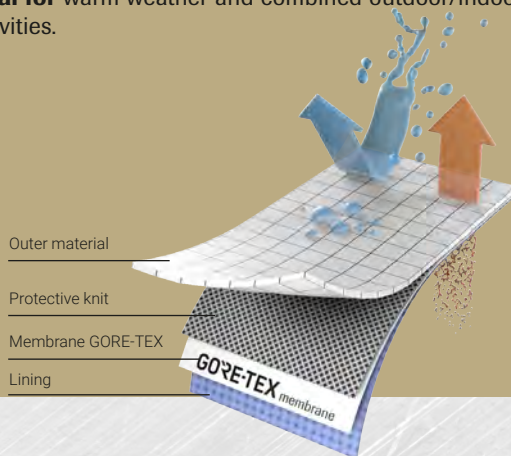
To meet the specific requirements of operational climate, activity level, and end-use environment, Goretex has developed special

footwear laminates. Three **Product Classes** make it easy to choose the appropriate footwear **for your final end use:**

GORE-TEX Extended Comfort Footwear

- Dry and comfortable for warm temperatures
- Durably waterproof, highly breathable and non insulated for high heat loss

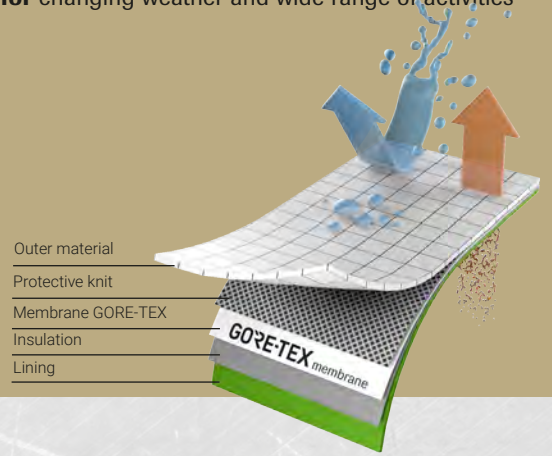
Ideal for warm weather and combined outdoor/indoor activities.



GORE-TEX Performance Comfort Footwear

- Dry and comfortable for moderate temperatures
- Durably waterproof, breathable and moderately insulated for a broad range of temperatures

Ideal for changing weather and wide range of activities





PROVEN QUALITY UNDER UNCOMPROMISING TESTING CONDITIONS.

More than the sum of its parts

All footwear parts (leathers, textiles, laces, foams, threads) and the entire boot construction are geared towards maximum performance in the final end use and subjected to uncompromising quality control during all phases of the product

development and production. GORE-TEX Footwear by far exceeds the requirements of the standard EN ISO 20345/347 with respect to waterproofness, breathability and durability.



Durable Waterproofness

GORE-TEX Footwear has to withstand up to 300,000 flex movements (80 hours) in ankle-high water - without allowing one single drop of water to penetrate inside the boot. EN ISO standard 20344 requires only 4800 flexes (80 minutes) and 3 cm² water entry is allowed.

Breathability

The materials used in GORE-TEX Footwear achieve a breathability value up to six times higher than the values specified in EN ISO standard 20345/47.

Durability

Inner lining and upper materials of GORE-TEX Footwear have to withstand up to four times more abrasion movement than specified in by the EN ISO standard.



POWERED BY



Vibram is the world leader in the technological development and manufacture of high-performance rubber soles, for the outdoor, work safety, lifestyle, orthopaedic and repair markets. For more than 80 years, the unmistakable yellow octagon has been the symbol of a company synonymous with quality, performance, safety, innovation and design. From the moment we created the first rubber sole for mountaineering, Vibram has become a benchmark in the footwear market. Vibram soles – derived from a desire to boost safety and protection – are known all over the world, and are the result of a constant commitment to research and development.

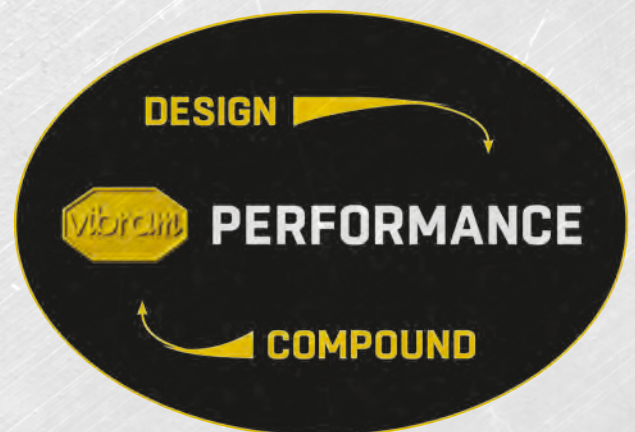


A STORY OF INNOVATION

The Vibram story began in 1936, when Vitale Bramani (an Academic of the Italian Alpine Club), on his return from a mountaineering ascent that ended in tragedy (1935), came up with the idea of making footwear soles using the same technique employed for making vehicle tyres. This stroke of genius led to the début of the first soles branded Vibram – a combination of the inventor's first name and surname – and the famous Carrarmato sole that revolutionised both mountaineering and the world of footwear, allowing for unprecedented performance in terms of abrasion resistance, traction and grip.



VIBRAM PERFORMANCE The secret of Vibram® performance is the optimal combination of hyperfunctional DESIGN and exclusive RUBBER COMPOUNDS. For more than 80 years Vibram® has been delivering the most advanced soles to the market. The Vibram® yellow octagon has become the gold standard of quality and performance throughout the footwear industry. Vibram® designers are aesthetic experts and know how to give a sole the best technical features for each specific use. They work together with Vibram Tester Team and our soling partners to get end users' feedback to perfect Vibram's product. They also collaborate with biomechanical institutes, to innovate cutting-edge lines, volumes and shapes for future soles. They strive to develop functional, comfortable, and original soles for top performance in the intended environment.



VIBRAM TESTS

Each and every Vibram sole must pass 3 levels of testing before it reaches the market. This series of tests ensures the product quality meets and use requirements.



LAB TESTS

- Conducted in a controlled environment
- Physical-mechanical characteristics run by machines
- Test samples: soles.
- Output: slip resistance, abrasion, elasticity, hardness, density



FIELD TEST

- Outdoor Testing under the most extreme but real situations .
- Blind tests run by the VIBRAM® Tester Team .
- Test samples on shoes: soles, designs and compounds .
- Output: approval: product is ready to the market



IN VIVO TESTS

- Indoor Testing on shoes with flat sole design.
- Run on shoes by humans with scientific protocols ("in-vivo") .
- Test samples: flat design soles to focus on compound performance Output: trustable compounds comparison.

COMPOUND



TC4+

- Engineered for use in a wide range of work and safety environments.
- Provides a high level of grip and durability
- Excellent heat and tear resistance



■ GRIP ■ TRACTION ■ BRAKING ■ STABILITY ■ CUSHIONING ➤ SELF-CLEANING

DESIGN

1. Large contact area for GRIP ON INDUSTRIAL CONTAMINATED FLOORS
2. Reinforced lugs for STABILITY and DURABILITY
3. Oil draining channels to enhance GRIP and SAFETY

THIS IS A REVOLUTION!

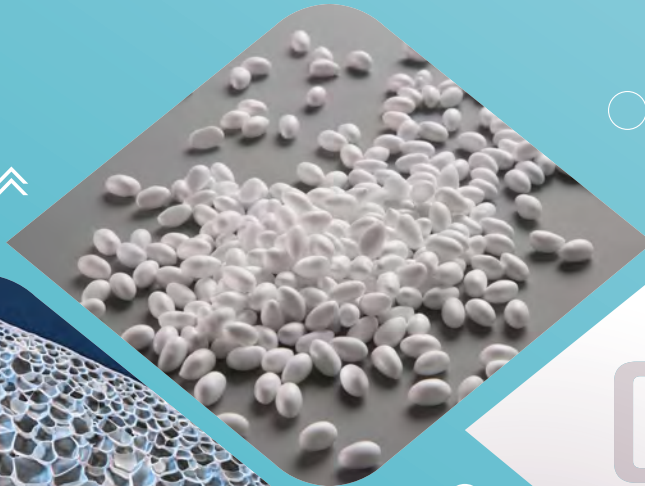
Research and innovation motivate us to develop high performance products. To realise **Red 360, RedLion, Red over, Red Pro** and **Bau & Building** we collaborated with the world leading chemical innovators BASF Group and their cutting edge **Infinergy®**, the first expanded TPU (E-TPU = Expanded Thermoplastic Polyurethane), Lightness and flexibility in a single product.

WHY? BECAUSE YOUR WELLBEING AND SAFETY IN THE WORKPLACE IS OUR PRIORITY!

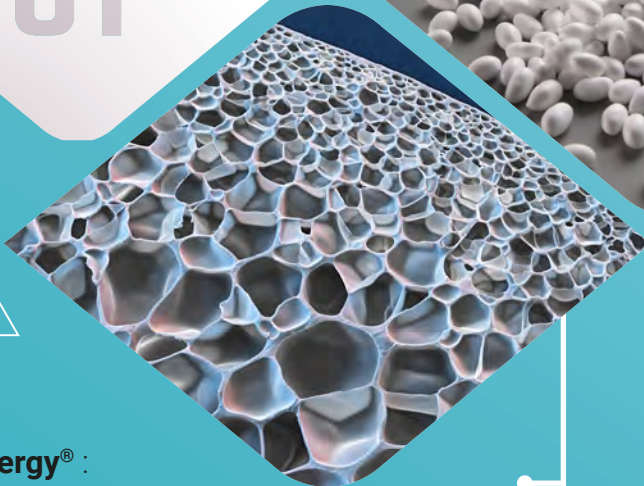
Red Lion stems from our desire to find solutions; we have looked at comfort, ergonomics, economy of energy and performance to reduce the stress in your working life, no matter how far you may travel in a day.

Infinergy® is a real breakthrough in innovation, originally designed for the world of sport, it revolutionised the running shoe. BASF's technological expertise in particle foams combined with their experience with thermoplastic polyurethanes lead to this entirely new closed-cell elastic particle foam; where the benefits of thermoplastic polyurethane (TPU) are retained, but to these are added the typical properties of foam. This combines two normally opposing characteristics: on one side softness and comfort and on the other stability and resilience.

01



02



Infinergy® :

- . Great flexibility
- . High resilience
- . Flexibility and lightness
- . Low density
- . High tensile strength
- . High impermeability
- . Resistance to wide temperature changes +40°C to - 20 °C

Infinergy® stores energy to return. A concentration of technology that reinvents traditional cushioning – dynamic cushioning.

- . Soft and dynamic cushioning that returns positive energy to the wearer. Energy is stored as the foot hits the ground and is returned through the sole as the foot lifts up, pushing the foot forward. A large amount of the expended energy is returned to the wearer.
- . Excellent long-term strength even when exposed to constant stress
- . Unlike traditional foams, Infinerger® still retains its elastic memory whilst withstanding temperatures of -20°C to over +40°C



TECHNOLOGY

Comfortable throughout the whole day

The Infinergy® cushioning helps to maintain energy levels for longer than any traditional sole with the added benefit of lightness, freedom of movement, anti-fatigue and reduction of musculoskeletal disorders.

Is the solution to improve the conditions for workers subjected to different daily situations and stresses:

- Standing for long periods
- Walking long distances
- Long periods kneeling or squatting
- Walking up and down stairs repeatedly
- Repetitive stress

03



Infinergy®

Made with Infinergy® by BASF

04



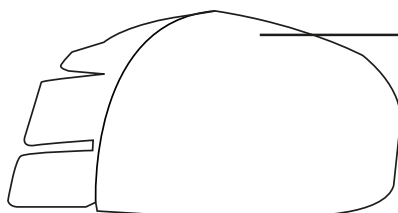
Maximum comfort and responsiveness:

- A natural flexibility along the entire surface of the foot from the heel to toe.
- A light and flexible outer sole, which adapts to the sole surface, thanks to its design and ensures maximum stability
- A combination of uppers giving an elegant look, built with very soft materials that wrap the foot in total comfort: ultra-breathable textile materials and natural full grain leather.

Good looking and a perfect fit combined with cushioning!

s all of your daily challenges!

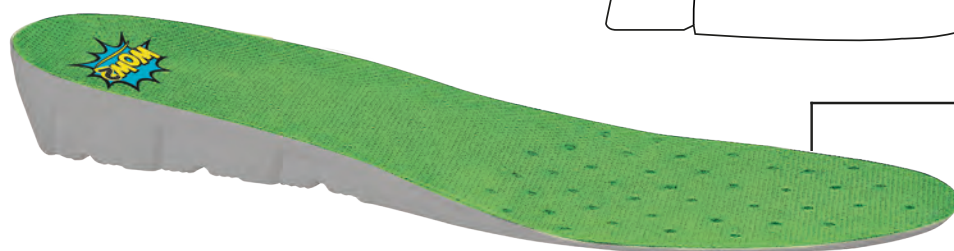
NEW



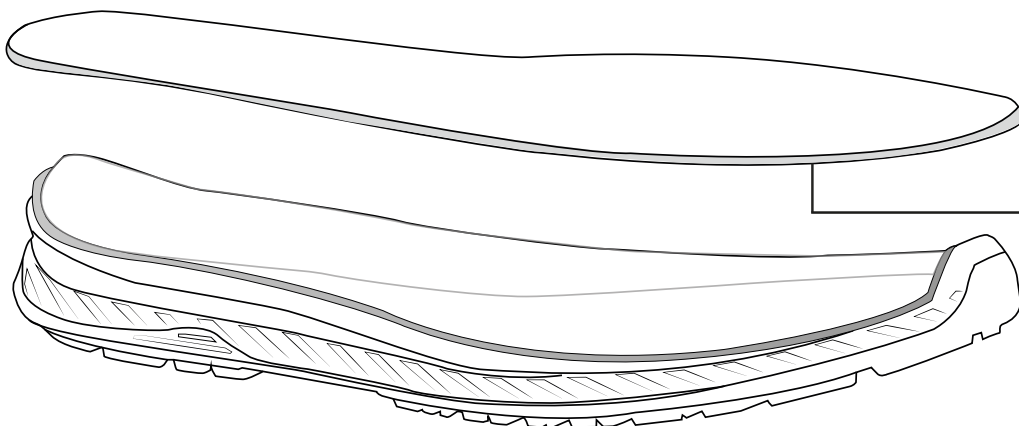
TOE CAP
200J RESISTANT



ANATOMICAL INSOLE OF SOFT DYNAMIC
COMPOUND COMBINED WITH AN ANTI-FATIGUE
INSERT AND AIR CIRCULATION CHANNELS.



NEW SEAMLESS ESD TECHNOLOGY INCREASES
COMFORT AND REDUCES CONTACT RUBBING
WITH THE SOLE OF THE FOOT



NON METALLIC
ANTIPERFORATION,
100% PROTECTED SURFACE

TIRED AND HEAVY LEGS?

NO PROBLEM, U-POWER HAS DESIGNED A CUSTOMISED PRODUCT FOR YOU THAT CAN HAVE A POSITIVE INFLUENCE ON YOUR BODY!, ENSURING HIGH PERFORMANCE IN TERMS OF COMFORT, BALANCE AND SHOCK DISTRIBUTION IN THE WORKPLACE.



W U-POWER SHOES WITH **wow2** EFFECT

THE CONTINUOUS **RESEARCH AND DEVELOPMENT** FROM U-POWER SURPRISES US WITH THE INNOVATIVE **wow2** INSOLE THAT COMBINES THE BEST TECHNOLOGIES TO OFFER EVERYONE AN EXPERIENCE OF **ABSOLUTE COMFORT!**



wow2

- **ANTIFATIGUE**
- **COMFORT**
- **BREATHABLE**

THE INSOLE **wow2** CONSISTS OF **TWO ELEMENTS:**

AN ARCH **STRUCTURE** IN **SOFT DYNAMIC COMPOUND**, WITH SELF-MODELLING PROPERTIES CAPABLE OF EVENLY DISTRIBUTING THE PRESSURE OF THE BODYWEIGHT ON THE FOOT.

AN **INSERT** MADE WITH A REVOLUTIONARY **BASF** COMPOUND THAT GUARANTEES **ANTI-FATIGUE** PROPERTIES, ABLE TO ABSORB AND RELIEVE BODY STRESS CAUSED BY A PROLONGED STATIONARY POSITION AT FIXED WORKSTATIONS.

THE RESULT IS A FEELING OF **IMMEDIATE BENEFIT** FROM THE FIRST WEAR OF THE SHOE, WHICH TRANSLATES INTO **LESS DAILY FATIGUE** DURING THE WORKING DAY.



The products of the red industry green line have achieved zero net CO₂ emissions through the use of materials with reduced environmental impact and the offsetting of the residual emissions by the purchase of carbon credits certified according to arrangements and methodologies recognised by the United Nations.



Organisation with CFP Systematic Approach certified by Bureau Veritas Italia Spa in accordance with standard ISO 14067:2018

www.carbonfootprintitaly.it



RED INDUSTRY Green

MAXIMUM PROTECTION AND COMFORT WITH GREAT RESPECT FOR THE ENVIRONMENT



- SOLE: in PU by BASF **100% MADE FROM RENEWABLE RESOURCES***
- INSOLE: in PU by BASF **100% MADE FROM RENEWABLE RESOURCES***
- UPPER AND ANTI-PERFORATION in components with **HIGH PERCENTAGE OF RECYCLED MATERIAL**

For more information about BASF:



OUR ECO-SUSTAINABLE MISSION

A circular economy for the environment that minimises waste, reuses and recovers materials, reduces CO₂ emissions by offsetting them with specific projects.

U-POWER DOES NOT STOP HERE

We will continue to invest in research and development on a daily basis, optimising our processes and reducing our consumption in order to develop increasingly GREEN solutions.

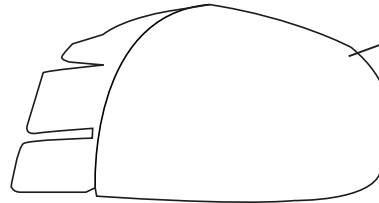
*Use of REDcert2 certified products of BASF that come with a 100% substitution of fossil with renewable raw materials in the value chain.

Laces 100% recycled polyester.

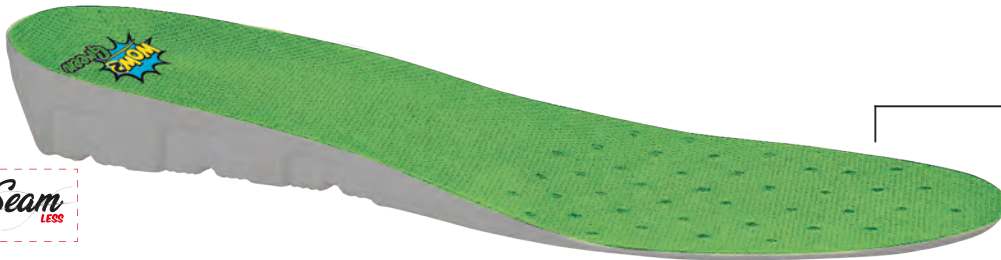
Upper
PUTEK spider repet with 68% of recycled material
Ultra RESISTANT, WATERPROOF AND BREATHABLE.



Lining with 66% of recycled air tunnel material, highly breathable: dissipates sweat and keeps the foot dry.



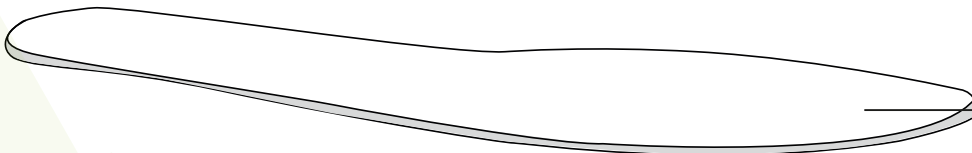
Toe cap
200J resistant



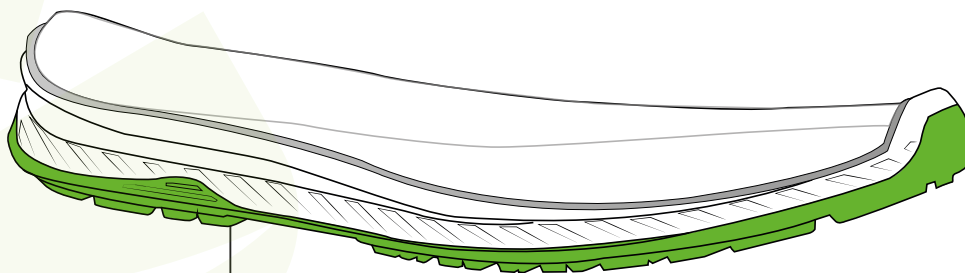
100% renewably sourced PU **footbed** by BASF. Accommodates the foot, giving it a feeling of relief and lightness. Anatomical and antibacterial.



New seamless ESD technology increases comfort and reduces contact rubbing with the sole of the foot



Anti-perforation system with high percentage of recycled material and totally "Metalfree" Anti-puncture protection guaranteed on 100% of the surface because it is sewn directly onto the upper.



PU soles by BASF
100% renewably sourced
Anti-abrasion, anti-oil, anti-slip and anti-static.



ENVIRONMENTAL COMMUNICATION IN RESPECT OF THE STANDARD EN ISO 14021:2016

"U-Power?... I have worn, tested and approved them!"



Who is Michele Montagna?

Professional Kinesiologist (from the Greek kinesis = movement and lógos = office) is a researcher in the field of Human Movement.

What does he do?

His professional career aims at studying how musculoskeletal system disorders affect the General Health condition.

He is a supporter of the scientific principles of static - dynamic rebalancing, with respect to postural perturbations, in order to positively influence human body dysfunctions, through spontaneous healing processes.

He is involved in project management and strategic planning, concerning Prevention issues, Occupational Ergonomics, Occupational Health and Safety at Work (Italian Legislative Decree 81/2008), Sport and Wellness.

He is currently Kinesiologist and Professor of Occupational Ergonomics, in the Prevention of Occupational Musculoskeletal Disorders, a topic on which he wrote a manual for workers (ABC per la Prevenzione dei Disturbi Muscolo Articolari (ABC's for the Prevention of Muscular Joint Disorders) - EPC Editor).

His certifications

Degree in Sport Science

UNC Kinesiologist No. 14307 - National Union of Kinesiologists

Master's Degree in Sport Management and Sport Activities

International Diploma of Francoise Mezieres Posturological Method Training

Professor of Ergonomics, Prevention and Treatment of Occupational Musculoskeletal Disorders (DMS)

Certified Occupational Health and Safety Trainer (Italian Legislative Decree 81/2008)

Fitness, Sport, Health and Wellness Technical consultant

Why is the work shoe fundamental?

The qualities of safety footwear are fundamental not only because they offer immediate protection but because they guarantee, in the short, medium and long term, use that preserves the all-round general mental/physical health of workers. The medium and long term consequences are the most difficult to identify however if attention is paid, they can direct the choice of work shoe towards effective solutions, designed according to the principles that regulate the delicate balance of the locomotor apparatus.

The following observations of a technical-scientific nature and carried out on U-Power footwear are possible thanks to the use of Kinesiology, that is the study of human movement, and Biomechanics which analyses the behaviour of physiological structures when subjected to static or dynamic stresses.

SHORT-TERM BENEFITS*

- Maximum grip /safety
- Reduced fatigue at the end of the day
- Decreased effort in movements with the same number of work hours
- Decreased energy expenditure when walking
- Less heaviness of the legs
- Reduction of risk factors related to slipping accidents
- Reduction of risk factors related to fear of slipping (antalgic gait)
- Reduction of risk factors related to accidents caused by tripping
- Reduction of risk factors that lead to harmful postures
- Reduction of risk factors related to cervical spine pain (for example stiff neck)
- Reduction of risk factors related to events such as day and night cramps
- Reduction of risk factors related to muscle contractions
- Reduction of risk factors related to accidents "without apparent causes"
- Reduction of risk factors related to acute low back pain (lumbago)
- Reduction of risk factors related to shocks to the skeletal system
- Reduction of risk factors related to the disturbance of respiratory dynamics
- Reduction of risk factors related to the manifestation of cortisol (stress hormone)

MEDIUM-TERM BENEFITS*

- Greater balance
- Increased reflexes
- Reduced heaviness of the legs
- Greater sensitivity and perception of the legs
- Reduction /disappearance of fascial muscle pain of the legs
- Reduction /disappearance of joint pain of the legs
- Better circulation and oxygenation of the legs
- Improved strength level of the legs
- Reduction /disappearance of sciatic-related pain
- Greater oxygenation of muscles and internal organs
- Better muscle function
- Greater joint mobility
- Reduction / disappearance of general muscle and joint pain
- Reduction / disappearance of pain and/or inflammation
- Acquisition of increased freedom of movement
- Reduction / disappearance of recurrent headaches (headaches and migraines)
- Reduction / disappearance of muscle/fascia pain in the upper limbs
- Reduction / disappearance of tingling / paraesthesia
- Reduction / disappearance of arthritis symptoms

LONG-TERM BENEFITS*

- Reduction /disappearance of chronic longterm pain
- Improved leg strength
- Greater oxygenation of the back
- Improved mobility of the spinal column
- Improvement of one's static and dynamic posture
- Improvement of gastro-intestinal functions
- Improvement of general organic functions
- Greater oxygenation of the spinal cord
- Normalisation of the STP postural tonic system (general postural rigidity level)
- Reduction of corns and calluses
- Improvement of the plantar support
- Improved walking
- Reduction of osteoarthritis symptoms
- Improved energy upon waking in the morning
- Improved respiratory function
- Reduction / disappearance of symptoms and disorders indirectly involved in postural type dysfunctions
- Reduction in the degree of body inflammation
- Increased body awareness
- Improvement of spontaneous healing abilities (Immune System)

*N.B. The definition of short, medium and long term cannot be objective due to countless concurrent factors and given the subjectivity of each individual worker.

THE IMPORTANCE OF SLIP RESISTANCE

What would happen if we had to work on an extremely slippery floor? Instinctively we would be inclined to slow the pace and movements down, but without the certainty of having a guaranteed grip-safe tread. Furthermore, our body would tend to stiffen putting the greatest number of muscles into action simultaneously, in order to provide cohesion to the entire system, ready to be reactive in the event of slipping and loss of balance. U-POWER and the 0.68 high grip tread technology (used in the Red Lion line) reduces injury risk factors allowing maximum safety of movement on the most insidious surfaces during static and dynamic activity. The perception of adherence, with relative grip, of one's work shoe allows muscle-tension stress to be reduced. A high grip tread and neat edges lightens each step by reducing the use of energy required for motion and movement (greater grip = less work strength required). Basically this means that the worker will have a guarantee of greater safety, less energy expenditure and less muscle-joint tension which may occur over time.

"I was able to try and test a common work shoe and U-Power shoes respectively, comparing them through static and dynamic tests. U-Power footwear, in essence, unlike common commercial technologies, has proven to be superior and advanced, fully capable of meeting the concept of "Freedom of Movement" that is essential to workers tackling each work day without concerns and with peace of mind"

INFINERGY (RED LION)

"Very often both muscle hypotonia and hypertonia are caused by multiple concomitant factors and amplified by any risk factors, for example unsuitable work shoes"

Now imagine walking with a work shoe, that is able to dissipate joint and muscle stress while simultaneously provide valid support that lightens the pace by reducing the metabolic muscle expenditure, and increasing energy in its dynamic mode. Hence the creation of Infinergy an innovative BASF polymer used in the running world, implemented by U-POWER in work shoes; in the form of microcapsule cohesion and fusion, which creates a material with elevated elastic capacities without altering its properties over time with use. The INFINERGY

insert positioned under the heel allows ENERGY TO BE STORED with each step and to feel it RETURN when the foot leaves the ground. A real anti-gravitational push; the polymer compresses, storing kinetic energy, under the pressure of the foot and this temporary deformation will supply KINETIC ENERGY when the foot leaves the ground with a great anti-fatigue effect. Muscles and leg circulation are the first to benefit; shortly thereafter the positive effects are perceived indirectly, on the well-being of the spine.

INFINERGY COMBINES:

Lightness of the step, dissipation of load on cartilage and joints, support and biomechanical assistance during rolling, return of potential energy in KINETIC ENERGY = greater work strength, reduced metabolic energy action, reduction of muscle tension, better circulation, increased strength, anti-fatigue effect on legs, back and neck, improvement of postural disorders.

INFINERGY energy confers lightness to U-POWER footwear which minimises muscle-fascial and joint tensions thereby benefitting the static and dynamic postural balance of workers.

"Scientific studies show that the majority of muscular-articular disorders that occur during one's work life can be prevented and treated with the use of shoes which exploit technologies capable of reducing and/or resolving those imbalances due, among the various causes, to continuous shocks to the joints"

"The sensation of wearing U-Power shoes is like not wearing a work shoe at all"

PU HIGH REBOUND in Elastopan FROM BASF (RED UP AND RED UP PLUS)

The PU surface ABSORBS the impact of the foot when your weight is on it, reducing trauma to the joints and relative cartilage. The High Rebound technology ACCUMULATES potential energy with every step, which converts into a RETURN of kinetic energy, that the individual wearing

U-POWER shoes can perceive. When walking, due to a series of sensorial information, the PU generates a viscoelastic response reaction of the myo-fascia (connective sheath that envelops muscles, tendons, fascia and ligaments, with a supporting and circulatory function) which will allow GREATER MUSCULAR EFFECTIVENESS with LOWER ENERGY EXPENDITURE and INCREASED CIRCULATORY FUNCTION.

Thus it is obvious that the rolling action of the foot, i.e. the series of movements of each step - heel, sole, toe - can be carried out like a balance, uniformly and with elasticity, WITH A PERCEPTABLE SENSATION OF PLEASANT WELL BEING.

SUMMARY

RED LION



THIS IS A REVOLUTION!

RED INDUSTRY



WOW EFFECT

RED INDUSTRY Green



THE FIRST SAFETY SHOE
CERTIFIED CARBON NEUTRAL

RED LEVE



LIGHTNESS AT YOUR FEET

GORE-TEX



WATERPROOF COMBINED
WITH LONG-LASTING
BREATHABILITY

ROCK&ROLL



STRONG & AGILE

FLAT OUT



ARE YOU READY?

U-SPECIAL



SPECIFIC TECHNICAL
SOLUTIONS

WHITE68&BLACK



NOT ONLY WHITE

SUMMARY





THIS IS A REVOLUTION!

The more energy you use, the more you receive!

No limit to your work...

No obstacle can stop you...

Redlion will make you invincible!!!

Thanks to the new **hi-tech Infinergy® sole** you will feel recharged at every step, ready for new challenges...

Redlion shoes, inexhaustible energy!!!



AIR TUNNEL LINING



SAFETY BREATHABLE TOE CAP



SAFETY BREATHABLE TOE CAP



"NO METAL" PIERCE-RESISTANT MIDSOLE



ANATOMIC FOOTBED



ANATOMIC LAST MONDOPOINT 11



POINT S1P SRC ESD RL20036

UPPER
Soft suede upper with Nylon inserts

SAFETY TOE CAP
AirToe Aluminium

PIERCE-RESISTANCE
Save & Flex® PLUS

FOOTBED
WOW

SOLE
PU/PU + Infinergy®

SIZE
from 35 to 48



VEROK S1P SRC ESD RL20216

UPPER
Soft suede upper with Nylon inserts

SAFETY TOE CAP
AirToe Aluminium

PIERCE-RESISTANCE
Save & Flex® PLUS

FOOTBED
WOW

SOLE
PU/PU + Infinergy®

SIZE
from 35 to 42



STEGO S3 SRC CI ESD RL10376

UPPER
High abrasion resistant PUTEK® PLUS, water resistant and breathable

SAFETY TOE CAP
AirToe Aluminium

PIERCE-RESISTANCE
Save & Flex® PLUS

FOOTBED
WOW

SOLE
PU/PU + Infinergy®

SIZE
from 35 to 48



RAPTOR S3 SRC CI ESD RL20376

UPPER
High abrasion resistant PUTEK® PLUS, water resistant and breathable

SAFETY TOE CAP
AirToe Aluminium

PIERCE-RESISTANCE
Save & Flex® PLUS

FOOTBED
WOW

SOLE
PU/PU + Infinergy®

SIZE
from 35 to 48



FACE S3 SRC CI ESD RL20144

UPPER
Soft nubuck water resistant leather
SAFETY TOE CAP
AirToe Aluminium
PIERCE-RESISTANCE
Save & Flex® PLUS
FOOTBED
WOW
SOLE
PU/PU + Infinergy®
SIZE
from 35 to 48



LINKIN S3 SRC CI ESD RL20254

UPPER
Water resistant, breathable New Safety Dry
SAFETY TOE CAP
AirToe Composite
PIERCE-RESISTANCE
Save & Flex® PLUS
FOOTBED
WOW
SOLE
PU/PU + Infinergy®
SIZE
from 35 to 48



CARBON S3 SRC CI ESD RL20013

UPPER
Soft nubuck water resistant leather
SAFETY TOE CAP
AirToe Aluminium
PIERCE-RESISTANCE
Save & Flex® PLUS
FOOTBED
WOW
SOLE
PU/PU + Infinergy®
SIZE
from 35 to 48



SLIP RESISTANCE



		EUROPEAN STANDARDS	RED LION
SRC (SRA+SRB)	SRA TEST FLOOR CERAMICS LUBRICANT WATER + DETERGENT	Flat	0,32
		Heel CONTACT ANGLE 7°	0,28
	SRB TEST FLOOR STEEL LUBRICANT GLYCERIN	Flat	0,18
		Heel CONTACT ANGLE 7°	0,13
			0,68
			0,44
			0,24
			0,15

SLIP RESISTANCE REQUIREMENTS ACCORDING TO THE EN ISO 20345:2011 METHOD REQUESTED BY EN 13287:2012



WOW EFFECT



TIRED AND HEAVY LEGS?

NO PROBLEM, U-POWER has designed a customised product for you that can have a positive influence on your body! , ensuring high performance in terms of comfort, balance and shock distribution in the workplace.



AIR TUNNEL LINING



SAFETY BREATHABLE TOE CAP



"NO METAL" PIERCE-RESISTANT MIDSOLE



ANATOMIC LAST MONDOPOINT 11



ANATOMICAL INSOLE WITH AN ANTIFATIGUE INSERT

DENVER

S1P SRC ESD RI21086

UPPER
Soft, breathable suede leather with mesh inserts
SAFETY TOE CAP
AirToe Composite
PIERCE-RESISTANCE
Save & Flex® PLUS
FOOTBED
Antifatigue **WOW2**
SOLE
PU compact Antislip, antistatic and oil resistant
SIZE
from 35 to 48



BERLINO

S1P SRC ESD RI21126

UPPER
Soft, breathable suede leather with mesh inserts
SAFETY TOE CAP
AirToe Composite
PIERCE-RESISTANCE
Save & Flex® PLUS
FOOTBED
Antifatigue **WOW2**
SOLE
PU compact Antislip, antistatic and oil resistant
SIZE
from 35 to 48



TOKYO

S1P SRC ESD RI21076

UPPER
Soft, breathable suede leather with mesh inserts
SAFETY TOE CAP
AirToe Composite
PIERCE-RESISTANCE
Save & Flex® PLUS
FOOTBED
Antifatigue **WOW2**
SOLE
PU compact Antislip, antistatic and oil resistant
SIZE
from 35 to 42



NAIROBI

S1P SRC ESD RI21096

UPPER
Soft suede upper with Nylon inserts
SAFETY TOE CAP
AirToe Composite
PIERCE-RESISTANCE
Save & Flex® PLUS
FOOTBED
Antifatigue **WOW2**
SOLE
PU compact Antislip, antistatic and oil resistant
SIZE
from 35 to 48



THE ^{Wow!} INSOLE CONSISTS OF TWO ELEMENTS:

- AN ARCH STRUCTURE IN SOFT DYNAMIC COMPOUND, WITH SELF-MODELLING PROPERTIES.
- AN INSERT MADE WITH A REVOLUTIONARY BASF COMPOUND THAT GUARANTEES ANTI-FATIGUE PROPERTIES.

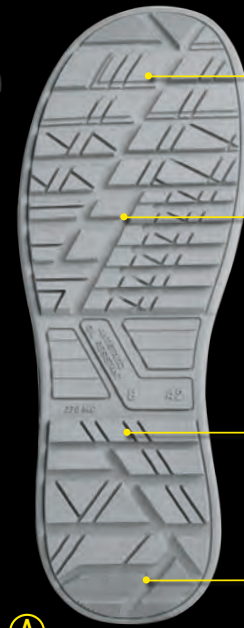
SLIP RESISTANCE

SRC (SRA+SRB)	TEST FLOOR CERAMICS LUBRICANT WATER + DETERGENT	Flat	EUROPEAN STANDARDS	RED INDUSTRY	
			≡	0,32	0,45
SRB	TEST FLOOR STEEL LUBRICANT GLYCERIN	Heel CONTACT ANGLE 7°	≡	0,28	0,32
			Flat	≡	0,18
SRA	TEST FLOOR CERAMICS LUBRICANT WATER + DETERGENT	Heel CONTACT ANGLE 7°	≡	0,13	0,21
			Flat	≡	0,18

SLIP RESISTANCE REQUIREMENTS ACCORDING TO THE EN ISO 20345:2011 METHOD REQUESTED BY EN 13287:2012



PU/PU NEXT GENERATION POLYMER



90° DEGREE ANGLE BLOCK PROFILE TO INCREASE ADHESION

MULTILEVEL STABILISING CHANNELS TO IMPROVE ANTI SLIP FEATURES

PREFORMED HEEL HEIGHT 6MM MULTIPURPOSE

90° DEGREE ANGLE BLOCK PROFILE TO INCREASE ADHESION



RIO S1P SRC ESD RI21116

UPPER
Soft, breathable suede leather with mesh inserts

SAFETY TOE CAP
AirToe Composite

PIERCE-RESISTANCE
Save & Flex® PLUS

FOOTBED
Antifatigue **WOW2**

SOLE
PU compact Antislip, antistatic and oil resistant

SIZE
from 35 to 48








MISTRAL S1P SRC ESD RI50086

UPPER
Soft, breathable suede leather with mesh inserts

SAFETY TOE CAP
AirToe Composite

PIERCE-RESISTANCE
Save & Flex® PLUS

FOOTBED
Antifatigue **WOW2**

SOLE
PU compact Antislip, antistatic and oil resistant

SIZE
from 35 to 47







OSLO S1P SRC ESD RI21136

UPPER
Soft suede upper with ventilation

SAFETY TOE CAP
AirToe Composite

PIERCE-RESISTANCE
Save & Flex® PLUS

FOOTBED
Antifatigue **WOW2**

SOLE
PU compact Antislip, antistatic and oil resistant

SIZE
from 35 to 47







SLIP RESISTANCE



SRC (SRA+SRB)	TEST FLOOR CERAMICS LUBRICANT WATER + DETERGENT	Flat	EUROPEAN STANDARDS	GORETEX	
			≡	0,32	0,51
SRB	TEST FLOOR STEEL LUBRICANT GLYCERIN	Heel CONTACT ANGLE 7°	≡	0,28	0,28
			Flat	≡	0,18
SRA	TEST FLOOR CERAMICS LUBRICANT WATER + DETERGENT	Heel CONTACT ANGLE 7°	≡	0,13	0,13
			Flat	≡	0,18

SLIP RESISTANCE REQUIREMENTS ACCORDING TO THE EN ISO 20345:2011 METHOD REQUESTED BY EN 13287:2012

STOCCOLMA S3 CI SRC ESD RI11074

UPPER
High abrasion resistant
PUTEK® PLUS, water resistant and breathable

SAFETY TOE CAP
AirToe Composite

PIERCE-RESISTANCE
Save & Flex® PLUS

FOOTBED
Antifatigue **WOW2**

SOLE
PU compact Antislip, antistatic and oil resistant

SIZE
from 35 to 48



METAL FREE 100%
Sepprol® (EN 13834:2012) (EN 13834:2012) (EN 13834:2012)

ESD

PU Tek PLUS*
HYPERTEX technology

(A)

LISBONA S3 CI SRC ESD RI21074

UPPER
High abrasion resistant
PUTEK® PLUS, water resistant and breathable

SAFETY TOE CAP
AirToe Composite

PIERCE-RESISTANCE
Save & Flex® PLUS

FOOTBED
Antifatigue **WOW2**

SOLE
PU compact Antislip, antistatic and oil resistant

SIZE
from 35 to 48



METAL FREE 100%
Sepprol® (EN 13834:2012) (EN 13834:2012) (EN 13834:2012)

ESD

PU Tek PLUS*
HYPERTEX technology

(A)

HELSINKI UK S3 CI SRC ESD RI11014

UPPER
Pull-up water resistant with anti-abrasion toe cap

SAFETY TOE CAP
AirToe Composite

PIERCE-RESISTANCE
Save & Flex® PLUS

FOOTBED
Antifatigue **WOW2**

SOLE
PU compact Antislip, antistatic and oil resistant

SIZE
from 35 to 48



METAL FREE 100%
Sepprol® (EN 13834:2012) (EN 13834:2012) (EN 13834:2012)

ESD

PU Tek PLUS*
HYPERTEX technology

(B)

MOSKA UK S3 CI SRC ESD RI21014

UPPER
Pull-up water resistant with anti-abrasion toe cap

SAFETY TOE CAP
AirToe Composite

PIERCE-RESISTANCE
Save & Flex® PLUS

FOOTBED
Antifatigue **WOW2**

SOLE
PU compact Antislip, antistatic and oil resistant

SIZE
from 35 to 48



METAL FREE 100%
Sepprol® (EN 13834:2012) (EN 13834:2012) (EN 13834:2012)

ESD

PU Tek PLUS*
HYPERTEX technology

(B)



* PU Tek Plus is exclusive to U- Group

FABRIC QUALITY	ABRASION RESISTANCE
Cordura® 500	300 revs
Cordura® 1000	600 revs
Putek Spider	3.000 revs
Putek® PLUS	5.000 revs



Putek® PLUS Technology uses newly developed high resistance abrasion yarns, woven directly into the fabric, to obtain high-tenacity and high-performance abrasion resistant fabrics. These highly resistant and water-repellent fabrics allow the creation of ultra-light and ultra-breathable S3 products.

EN ISO 20344:2011	EUROPEAN STANDARDS	PUTEK PLUS
PERMEABILITY OF WATER VAPOUR	≥ 0,8	24,7 mg/(cm²h)
COEFFICIENT OF WATER VAPOUR	≥ 15	199 mg/(cm²)

One single data is enough to state precisely the qualities that fabric and sewed can put into the field: if during laboratory tests a great fabric resists on average 51 thousands cycles, HyperTex reaches and overtakes over 1 million cycles. Due to needed timing to run traditional test, we had to use gloves Standard Method EN 388 using very aggressive sandpaper to a pressure of 12Kp. Final results proved that the resistance of HyperTex 6 is six times higher than Cordura 1000, widely used in high performance products.



* Tests in accordance with norm 20344:11 show breathability 4 times superior than minimum required for a safety footwear

PANAMA S3 CI SRC ESD RI10414

UPPER
High abrasion resistant
PU TEK® STAR, water
resistant and breathable
SAFETY TOE CAP
AirToe Composite
PIERCE-RESISTANCE
Save & Flex® PLUS
FOOTBED
Antifatigue **WOW2**
SOLE
PU compact Antislip,
antistatic and oil resistant
SIZE
from 35 to 48



PU Tek STAR
HYPERTEX technology



MONACO S3 CI SRC ESD RI20414

UPPER
High abrasion resistant
PU TEK® STAR, water
resistant and breathable
SAFETY TOE CAP
AirToe Composite
PIERCE-RESISTANCE
Save & Flex® PLUS
FOOTBED
Antifatigue **WOW2**
SOLE
PU compact Antislip,
antistatic and oil resistant
SIZE
from 35 to 48



PU Tek STAR
HYPERTEX technology





**FIRST SAFETY SHOE CERTIFIED
CARBON NEUTRAL**

The products of the Red industry green line have achieved zero net CO2 emissions through the use of materials with reduced environmental impact and the offsetting of the residual emissions by the purchase of carbon credits certified according to arrangements and methodologies recognised by the United Nations.



AIR TUNNEL LINING



SAFETY BREATHABLE TOE CAP



"NO METAL" PIERCE-RESISTANT MIDSOLE



ANATOMIC LAST MONDOPOINT 11



ANATOMICAL INSOLE WITH AN ANTIFATIGUE INSERT

CANYON UK S1P SRC ESD RI20346

UPPER
Soft microfibre with a high percentage of recycled material, with breathable inserts.

SAFETY TOE CAP
AirToe Composite

PIERCE-RESISTANCE
Save & Flex® PLUS GREEN

FOOTBED
WOW2 GREEN in PU di BASF

SOLE
100% renewably sourced PU from BASF; compact Antislip, antistatic and oil resistant

SIZE
from 35 to 48



NIAGARA UK S3 CI SRC ESD RI10324

UPPER
Soft microfibre with a high percentage of recycled material

SAFETY TOE CAP
AirToe Composite

PIERCE-RESISTANCE
Save & Flex® PLUS GREEN

FOOTBED
WOW2 GREEN in PU di BASF

SOLE
100% renewably sourced PU from BASF; compact Antislip, antistatic and oil resistant

SIZE
from 35 to 48



NATURAL UK S3 CI SRC ESD RI20324

UPPER
Soft microfibre with a high percentage of recycled material

SAFETY TOE CAP
AirToe Composite

PIERCE-RESISTANCE
Save & Flex® PLUS GREEN

FOOTBED
WOW2 GREEN in PU di BASF

SOLE
100% renewably sourced PU from BASF; compact Antislip, antistatic and oil resistant

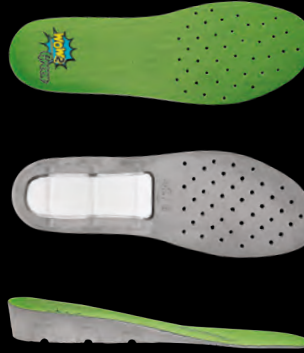
SIZE
from 35 to 48





THE **INSOLE** CONSISTS OF TWO ELEMENTS:

- AN ARCH STRUCTURE 100% RENEWABLY SOURCED PU FOOTBED BY BASF, WITH SELF-MODELLING PROPERTIES.
- AN INSERT MADE WITH A REVOLUTIONARY BASF COMPOUND THAT GUARANTEES ANTI-FATIGUE PROPERTIES.



PU/PU NEXT GENERATION POLYMER



90° DEGREE ANGLE BLOCK PROFILE TO INCREASE ADHESION

MULTILEVEL STABILISING CHANNELS TO IMPROVE ANTI SLIP FEATURES

PREFORMED HEEL HEIGHT 6MM MULTIPURPOSE

90° DEGREE ANGLE BLOCK PROFILE TO INCREASE ADHESION

SLIP RESISTANCE

SRC (SRA+SRB)	TEST FLOOR CERAMICS LUBRICANT WATER + DETERGENT	Flat	EUROPEAN STANDARDS	RED INDUSTRY
			Flat	0,32
SRA	TEST FLOOR CERAMICS LUBRICANT WATER + DETERGENT	Heel	0,28	0,32
		CONTACT ANGLE 7°		
SRB	TEST FLOOR STEEL LUBRICANT GLYCERIN	Flat	0,18	0,44
		Heel	0,13	0,21
		CONTACT ANGLE 7°		

SLIP RESISTANCE REQUIREMENTS ACCORDING TO THE EN ISO 20345:2011 METHOD REQUESTED BY EN 13287:2012



ISLAND UK S3 CI SRC ESD RI20334

- UPPER PUTEK® spider repet with a high percentage of recycled material
- SAFETY TOE CAP AirToe Composite
- PIERCE-RESISTANCE Save & Flex® PLUS GREEN
- FOOTBED WOW2 GREEN in PU di BASF
- SOLE 100% renewably sourced PU from BASF; compact Antislip, antistatic and oil resistant
- SIZE from 35 to 48



PU Tek® SPIDER REPE1 HYPERTEX technology



LAND UK S3 CI SRC ESD RI10384

- UPPER PUTEK® spider repet with a high percentage of recycled material
- SAFETY TOE CAP AirToe Composite
- PIERCE-RESISTANCE Save & Flex® PLUS GREEN
- FOOTBED WOW2 GREEN in PU di BASF
- SOLE 100% renewably sourced PU from BASF; compact Antislip, antistatic and oil resistant
- SIZE from 35 to 48



PU Tek® SPIDER REPE1 HYPERTEX technology



EMBER UK S3 CI SRC ESD RI20384

- UPPER PUTEK® spider repet with a high percentage of recycled material
- SAFETY TOE CAP AirToe Composite
- PIERCE-RESISTANCE Save & Flex® PLUS GREEN
- FOOTBED WOW2 GREEN in PU di BASF
- SOLE 100% renewably sourced PU from BASF; compact Antislip, antistatic and oil resistant
- SIZE from 35 to 48



PU Tek® SPIDER REPE1 HYPERTEX technology





LIGHT SAFETY SHOES

Red Leve is the range of super light safety shoes featuring a new generation sole and an ultralight insole that greatly reduce the total weight of the shoe. Safety, on the other hand, is the same as always: Airtoe toe cap, non-slip, oil-resistant, abrasion-resistant and anti-static protection sole.



AIR TUNNEL LINING



SAFETY BREATHABLE TOE CAP



"NO METAL" PIERCE-RESISTANT MIDSOLE



ANATOMIC LAST MONDOPOINT 11



ANATOMICAL INSOLE WITH AN ANTIFATIGUE INSERT



BEN S3 CI SRC ESD RV20024

UPPER
Water repellent microfiber nubuk effect

SAFETY TOE CAP
AirToe Aluminium

PIERCE-RESISTANCE
Ultralight penetration-proof insole

FOOTBED
U-POWER original

SOLE
New generation PU sole, ultralight, antiabrasion, oil & slip resistant, antistatic

SIZE
from 35 to 48

NEW



BRUCE S1P SRC ESD RV20026

UPPER
Breathable nylon and scuff cap protection in anti-abrasion material

SAFETY TOE CAP
AirToe Aluminium

PIERCE-RESISTANCE
Ultralight penetration-proof insole

FOOTBED
U-POWER original

SOLE
New generation PU sole, ultralight, antiabrasion, oil & slip resistant, antistatic

SIZE
from 35 to 48

NEW



PARKER S3 CI SRC ESD RV10024

UPPER
Water repellent microfiber nubuk effect

SAFETY TOE CAP
AirToe Aluminium

PIERCE-RESISTANCE
Ultralight penetration-proof insole

FOOTBED
U-POWER original

SOLE
New generation PU sole, ultralight, antiabrasion, oil & slip resistant, antistatic

SIZE
from 35 to 48

NEW



ADAM S1P SRC ESD RV20076

UPPER
Breathable nylon and scuff cap protection in anti-abrasion material

SAFETY TOE CAP
AirToe Aluminium

PIERCE-RESISTANCE
Ultralight penetration-proof insole

FOOTBED
U-POWER original

SOLE
New generation PU sole, ultralight, antiabrasion, oil & slip resistant, antistatic

SIZE
from 35 to 48

NEW



THOMAS S3 CI SRC ESD RV20134

UPPER
Water repellent microfiber nubuk effect

SAFETY TOE CAP
AirToe Aluminium

PIERCE-RESISTANCE
Ultra-light penetration-proof insole

FOOTBED
U-POWER original

SOLE
New generation PU sole, ultralight, antiabrasion, oil & slip resistant, antistatic

SIZE
from 35 to 48

NEW



BRADLEY S1P SRC ESD RV20144

UPPER
Breathable nylon and scuff cap protection in anti-abrasion material

SAFETY TOE CAP
AirToe Aluminium

PIERCE-RESISTANCE
Ultra-light penetration-proof insole

FOOTBED
U-POWER original

SOLE
New generation PU sole, ultralight, antiabrasion, oil & slip resistant, antistatic

SIZE
from 35 to 48

NEW



MICHELLE S1P SRC ESD RV20086

UPPER
Breathable nylon and scuff cap protection in anti-abrasion material

SAFETY TOE CAP
AirToe Aluminium

PIERCE-RESISTANCE
Ultra-light penetration-proof insole

FOOTBED
U-POWER original

SOLE
New generation PU sole, ultralight, antiabrasion, oil & slip resistant, antistatic

SIZE
from 35 to 48

NEW



SLIP RESISTANCE

		EUROPEAN STANDARDS		RED LEVE
SRC (SRA+SRB)	SRA	Flat	0,32	0,43
	TEST FLOOR CERAMICS LUBRICANT WATER + DETERGENT	Heel	0,28	0,42
		CONTACT ANGLE 7°		
	SRB	Flat	0,18	0,31
TEST FLOOR STEEL LUBRICANT GLYCERIN	Heel	0,13	0,29	
	CONTACT ANGLE 7°			

SLIP RESISTANCE REQUIREMENTS ACCORDING TO THE EN ISO 20345:2011 METHOD REQUESTED BY EN 13287:2012





WATERPROOF IN COMBINATION WITH LONG- LASTING BREATHABILITY

The GORE-TEX membrane prevents water from entering the shoe and ensures that your feet remain dry and protected. It is ultra-thin, highly waterproof and breathable.

Gore-tex is permeable for water vapour allowing perspiration to escape unhindered, because the pores in the GORE-TEX membrane are 700 times larger than a water vapour molecule, allowing your feet to "breathe".

Due to the microscopic pores which are approximately 20,000 times smaller than a water droplet, the GORE-TEX membrane is completely waterproof.

This technology provides the ideal climate comfort for your feet in every season.



DROP GTX S3 WR HRO HI CI SRC GO10054

- UPPER**
Full grain waterproof leather
- LINING**
GORE-TEX Performance Membrane
- SAFETY TOE CAP**
AirToe Composite
- PIERCE-RESISTANCE**
Save & Flex® PLUS
- FOOTBED**
WOW
- SOLE**
PU/VIBRAM
- SIZE**
from 38 to 47



HRO ≥ 300° C



CLIMB GTX S3 WR HRO HI CI SRC GO10064

- UPPER**
Pull-up waterproof leather
- LINING**
GORE-TEX Performance Membrane
- SAFETY TOE CAP**
AirToe Composite
- PIERCE-RESISTANCE**
Save & Flex® PLUS
- FOOTBED**
WOW
- SOLE**
PU/VIBRAM
- SIZE**
from 38 to 47



HRO ≥ 300° C



SLIP RESISTANCE



SRC (SRA+SRB)	SRA TEST FLOOR CERAMICS LUBRICANT WATER + DETERGENT	Flat	EUROPEAN STANDARDS	GORETEX
			≧	
SRC (SRA+SRB)	TEST FLOOR STEEL LUBRICANT GLYCERIN	Flat	0,32	0,43
		Heel CONTACT ANGLE 7°	0,28	0,31
SRB	TEST FLOOR STEEL LUBRICANT GLYCERIN	Flat	0,18	0,28
		Heel CONTACT ANGLE 7°	0,13	0,20

SLIP RESISTANCE REQUIREMENTS ACCORDING TO THE EN ISO 20345:2011 METHOD REQUESTED BY EN 13287:2012

SLIP RESISTANCE



SRC (SRA+SRB)	SRA TEST FLOOR CERAMICS LUBRICANT WATER + DETERGENT	Flat	EUROPEAN STANDARDS	GORETEX
			≧	
SRC (SRA+SRB)	TEST FLOOR STEEL LUBRICANT GLYCERIN	Flat	0,32	0,51
		Heel CONTACT ANGLE 7°	0,28	0,28
SRB	TEST FLOOR STEEL LUBRICANT GLYCERIN	Flat	0,18	0,26
		Heel CONTACT ANGLE 7°	0,13	0,13

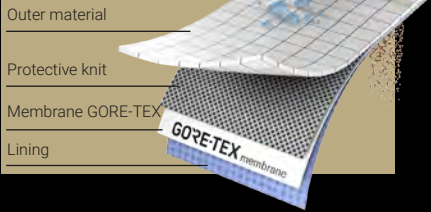
SLIP RESISTANCE REQUIREMENTS ACCORDING TO THE EN ISO 20345:2011 METHOD REQUESTED BY EN 13287:2012



GORE-TEX Extended Comfort Footwear

- Dry and comfortable for warm temperatures.
- Durably waterproof, highly breathable and non insulated for high heat loss.

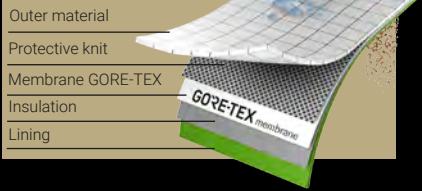
Ideal for warm weather and combined outdoor/indoor activities.



GORE-TEX Performance Comfort Footwear

- Dry and comfortable for moderate temperatures.
- Durably waterproof, breathable and moderately insulated for a broad range of temperatures.

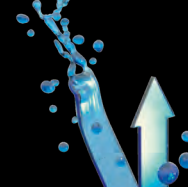
Ideal for changing weather and wide range of activities.



GORE-TEX Membrane

- Durably waterproof
- Breathable

Rain, puddles



Vapour, sweat



DOMINATION RS S3 WR SRC CI RL1E144

UPPER

High abrasion resistant PUTEK® PLUS, water resistant and breathable with soft nubuck leather inserts

LINING

GORE-TEX Performance Membrane

SAFETY TOE CAP

AirToe Composite

PIERCE-RESISTANCE

Save & Flex® PLUS

FOOTBED

WOW GEL

SOLE

PU/PU and Infinergy®

SIZE

from 35 to 48



ROCKET S3 WR SRC CI RL2E144

UPPER

High abrasion resistant PUTEK® PLUS, Lycra collar

LINING

GORE-TEX Performance Membrane

SAFETY TOE CAP

AirToe Aluminium

PIERCE-RESISTANCE

Save & Flex® PLUS

FOOTBED

WOW

SOLE

PU/PU and Infinergy®

SIZE

from 35 to 48



SLIP RESISTANCE



		EUROPEAN STANDARDS		RED LION
SRC (SRA+SRB)	SRA TEST FLOOR CERAMICS LUBRICANT WATER + DETERGENT	Flat	≥ 0,32	0,68
		Heel CONTACT ANGLE 7°	≥ 0,28	0,44
	SRB TEST FLOOR STEEL LUBRICANT GLYCERIN	Flat	≥ 0,18	0,24
		Heel CONTACT ANGLE 7°	≥ 0,13	0,15

SLIP RESISTANCE REQUIREMENTS ACCORDING TO THE EN ISO 20345:2011 METHOD REQUESTED BY EN 13287:2012

BREZZA S1P SRC RR20196

UPPER
Soft suede leather with wide side aerator for extra breathability

SAFETY TOE CAP
AirToe Composite

PIERCE-RESISTANCE
Save & Flex® PLUS

FOOTBED
Action Dry

SOLE
PU/PU

SIZE
from 35 to 48



MIAMI S1P SRC RR20346

UPPER
Pull-up water resistant leather with textile inserts

SAFETY TOE CAP
AirToe Composite

PIERCE-RESISTANCE
Save & Flex® PLUS

FOOTBED
Action Dry

SOLE
PU/PU

SIZE
from 38 to 47



YUKON S3 SRC RR20464

UPPER
Pull-up water resistant leather

SAFETY TOE CAP
AirToe Composite

PIERCE-RESISTANCE
Save & Flex® PLUS

FOOTBED
Action Dry

SOLE
PU/PU

SIZE
from 35 to 48



ARIZONA UK S3 SRC RR20443

UPPER
Water resistant leather

SAFETY TOE CAP
AirToe Composite

PIERCE-RESISTANCE
Save & Flex® PLUS

FOOTBED
Action Dry

SOLE
PU/PU

SIZE
from 35 to 48



POLYURETHANE SCUFF

CALGARY UK S3 SRC RR70374

UPPER
Pull-up water resistant leather with Polyurethane scuff

SAFETY TOE CAP
AirToe Composite

PIERCE-RESISTANCE
Save & Flex® PLUS

FOOTBED
Action Dry

SOLE
PU/PU

SIZE
from 38 to 47



POLYURETHANE SCUFF

GREENLAND UK S3 SRC RR10364

UPPER
Pull-up water resistant leather with Polyurethane scuff

SAFETY TOE CAP
AirToe Composite

PIERCE-RESISTANCE
Save & Flex® PLUS

FOOTBED
Action Dry

SOLE
PU/PU

SIZE
from 35 to 48



POLYURETHANE SCUFF

QUEBEC UK S3 SRC RR20364

UPPER
Pull-up water resistant leather with Polyurethane scuff

SAFETY TOE CAP
AirToe Composite

PIERCE-RESISTANCE
Save & Flex® PLUS

FOOTBED
Action Dry

SOLE
PU/PU

SIZE
from 35 to 47



POLYURETHANE SCUFF

WALTER **S3 SRC UF10064**

UPPER
Pull-up water-resistant leather, soft and strong

SAFETY TOE CAP
AirToe Aluminium

PIERCE-RESISTANCE
Save & Flex® PLUS

FOOTBED
WOW

SOLE
PU/PUTR GRIP

SIZE
from 38 to 47

UNI 11583:2015
Norm for the safety and protection standard to be used on inclined roofs.




BJORN **S3 SRC UF20084**

UPPER
Pull-up water-resistant leather, soft and strong

SAFETY TOE CAP
AirToe Aluminium

PIERCE-RESISTANCE
Save & Flex® PLUS

FOOTBED
WOW

SOLE
PU/PUTR GRIP

SIZE
from 35 to 47




SENNA **S1P SRC UF20206**

UPPER
Soft suede upper with ultra-breathable textile inserts

SAFETY TOE CAP
AirToe Aluminium

PIERCE-RESISTANCE
Save & Flex® PLUS

FOOTBED
WOW

SOLE
PU/PUTR GRIP

SIZE
from 38 to 47




SLIP RESISTANCE

		EUROPEAN STANDARDS		U-POWER
SRC (SRA+SRB)	SRA TEST FLOOR CERAMICS LUBRICANT WATER + DETERGENT	Flat	0,32	0,71
		Heel CONTACT ANGLE 7°	0,28	0,52
	SRB TEST FLOOR STEEL LUBRICANT GLYCERIN	Flat	0,18	0,32
		Heel CONTACT ANGLE 7°	0,13	0,23

SLIP RESISTANCE REQUIREMENTS ACCORDING TO THE EN ISO 20345:2011 METHOD REQUESTED BY EN 13287:2012

U-SPECIAL

BULLS **S3 HRO HI SRC S010213**

UPPER
Water resistant leather

SAFETY TOE CAP
AirToe Composite

PIERCE-RESISTANCE
Classic steel midsole

FOOTBED
Ergo Dry

SOLE
PU/VIBRAM

SIZE
from 38 to 47

FLAME RESISTANT KEVLAR® STITCHING





HRO ≥ 300° C (B)



SLIP RESISTANCE

		EUROPEAN STANDARDS		GORETEX
SRC (SRA+SRB)	SRA TEST FLOOR CERAMICS LUBRICANT WATER + DETERGENT	Flat	0,32	0,43
		Heel CONTACT ANGLE 7°	0,28	0,31
	SRB TEST FLOOR STEEL LUBRICANT GLYCERIN	Flat	0,18	0,28
		Heel CONTACT ANGLE 7°	0,13	0,20

SLIP RESISTANCE REQUIREMENTS ACCORDING TO THE EN ISO 20345:2011 METHOD REQUESTED BY EN 13287:2012

NOT ONLY WHITE

Special jobs require special safety shoes. Protection against **invisible threats**, like bacteria, debris, organic and chemical residues, the technical materials like **Ecolorica**, **New Safety Dry** and **Microfiber** offer the required protection to the feet. All the products can be **easily washed** thanks to the **essential design** and the materials used.



RESPONSE GRIP S2 SRC UW20032

UPPER
Water resistant, breathable New Safety Dry

SAFETY TOE CAP
AirToe Composite

PIERCE-RESISTANCE
Not present

FOOTBED
White Ergo Dry

SOLE
PU/PU

SIZE
from 35 to 48



STRUCTURE S2 SRC UW20112

UPPER
Water resistant, breathable New Safety Dry

SAFETY TOE CAP
AirToe Composite

PIERCE-RESISTANCE
Not present

FOOTBED
White Ergo Dry

SOLE
PU/PU

SIZE
from 35 to 48



SLIP RESISTANCE

		EUROPEAN STANDARDS		INDUSTRY
SRC (SRA+SRB)	SRA TEST FLOOR CERAMICS LUBRICANT WATER + DETERGENT	Flat	≥ 0,32	0,45
		Heel CONTACT ANGLE 7°	≥ 0,28	0,32
	SRB TEST FLOOR STEEL LUBRICANT GLYCERIN	Flat	≥ 0,18	0,44
		Heel CONTACT ANGLE 7°	≥ 0,13	0,21

SLIP RESISTANCE REQUIREMENTS ACCORDING TO THE EN ISO 20345:2011 METHOD REQUESTED BY EN 13287:2012



LACES

- ST1N100** BLACK COLOUR
cm 100 - 1 pair pack
- ST1N120** BLACK COLOUR
cm 120 - 1 pair pack
- ST1N140** BLACK COLOUR
cm 140 - 1 pair pack



LACES

- ST5N100** BLACK COLOUR
cm 100 - 5 pairs pack
- ST5N120** BLACK COLOUR
cm 120 - 5 pairs pack
- ST5N140** BLACK COLOUR
cm 140 - 5 pairs pack



LACES

- ST1V100** GREEN COLOUR
cm 100 - 1 pair pack
- ST1V120** GREEN COLOUR
cm 120 - 1 pair pack
- ST1V140** GREEN COLOUR
cm 140 - 1 pair pack



LACES

- ST5V100** GREEN COLOUR
cm 100 - 5 pairs pack
- ST5V120** GREEN COLOUR
cm 120 - 5 pairs pack
- ST5V140** GREEN COLOUR
cm 140 - 5 pairs pack



WOW

- CS00604** INSOLE
single pack
SIZE: from 35 to 48



WOW2



- CS00605** INSOLE
single pack
SIZE: from 35 to 48

EUROPEAN NORMS

EUROPEAN STANDARDS ON SAFETY SHOES

(UE) 2016/425	Directive of the European Council regarding standardization of national laws
EN ISO 20344:2011	PPE Personal Protection Equipments – Footwear test methods
UNI 11583:2015	Norm for the safety and protection standard to be used on inclined roofs
EN ISO 20349:2010	Small projection of melted metal during Welding and connected processes
EN ISO 20345:2011	Personal Protection Equipments – Safety footwear
EN ISO 20346:2007	Personal Protection Equipments – Protective footwear
EN ISO 20347:2012	Personal Protection Equipments – Occupational footwear
EN 13287:2012	Requirements and tests methods for slip resistance
CEI EN 61340-5-1	Protection of electronic devices against electrostatic phenomena - ESD

IDENTIFICATION MARKS TO BE FOUND ON OUR PRODUCT

CEI EN 6134 -5-1	Protection of electronic devices against electrostatic phenomena - ESD
	Producer's Logo and product responsible
	Commercial name
EN ISO 20345:2011	Standard reference
UA10274 S3 HRO	Product code and protection category reference
01/2021	Month and year of production
42	Size of the product

Information may be placed in different places on the product, provided that it's always reachable and visible.

SIZE COMPARISON TABLE

English Sizes	2	3	4	5	6	6,5	7	8	9	10	10,5	11	12	13
European Sizes	35	36	37	38	39	40	41	42	43	44	45	46	47	48

TABLE OF PROTECTION ON OUR SAFETY SHOES

A	Antistatic footwear	Electrical resistance of the compressed bottom between 1x10 ⁵ Ω and 1x10 ⁹ Ω
E	Heel area energy absorption	Mechanical risk: reduction of heel trauma resulting from impacts or falls from limited heights. mechanical energy ≥ 20 joules
FO	Walking sole surface resistant to hydrocarbons	Increase in sole sample volume < 12%
WRU	Water resistant upper material	Resistance to penetration and absorption of water from the uppers H ₂ O absorption after 60' ≤ 30% H ₂ O transmitted after 60' ≤ 0,2 gr
P	Pierce resistant midsole	> 1100 Newton
CI	Thermal cold insulation of the sole	Decrease T ≥ 10 °C in environment at -17 °C for 30'.
HI	Thermal heat insulation of the sole	Increase T ≥ 22 °C resting on plate at T of 150 °C for 30'.
HRO	Walking sole surface heat resistance to temperature on contact	Sample in contact at 300 °C. for 60" - Does not melt
AN	Ankle protection	Mechanical risk, ankle protection: mean value of transmitted force ≥ 10 kN maximum value < 15 kN
WR	Water resistant shoes	After 1000 steps or after 80' of automatic dynamic cycle no more than 3cm ² of water (stain) should enter
M	Shoe with metatarsal protection	Mechanical risk, metatarsus protection: falling objects, foot bumps. Height after impact ≥ 40 mm (size 42)
CR	Cut resistant upper	I factor > 2,5

SLIP RESISTANCE OF THE OUTSOLE

SLIP RESISTANCE REQUIREMENTS ACCORDING TO THE EN ISO 20345:2011
METHOD REQUESTED BY EN 13287:2012

SYMBOLS USED	EUROPEAN STANDARDS REQUIREMENTS
SRA Test floor: ceramics Lubricant: water + detergent	≥ 0,32 Flat ≥ 0,28 Heel (contact angle 7°)
SRB Test floor: steel Lubricant: glycerin	≥ 0,18 Flat ≥ 0,13 Heel (contact angle 7°)
SRC (SRA+SRB)	Both tests methods applied

SAFETY CATEGORIES AND SYMBOLS USED

EN ISO 20345:2011

Safety shoes,
with 200J resistant toe cap

- SB** Safety Basic
- S1** A+SB+E
- S1P** A+SB+E+P
- S2** A+SB+E+WRU
- S3** A+SB+E+WRU+P
- S4** A+SB+E+
(water resistance)
BOOTS
- S5** A+SB+E+P+
(water resistance)
BOOTS

EN ISO 20346:2011

Protection shoes,
with 100J resistant toe cap

- PB** SB
- P1** A+SB+E
- P2** A+SB+E+P
- P3** A+SB+E+WRU+P

EN ISO 20347:2012

Working shoes,
without protecting toe cap

- OB** SB (only if present)
- O1** A+E
- O1P** A+E+P
- O2** A+E+WRU
- O3** A+E+WRU+P
- O4** A+E+(water resistance)
BOOTS
- O5** A+E+(water resistance)
BOOTS

For any question concerning articles, legislation and technical data please do not hesitate to contact our commercial offices.

ALL U-POWER COLLECTIONS
ARE VISIBLE ON OUR WEB SITE:
www.upower.it/en



Scan this QR code on your smartphone and enter into the world of U-POWER.

This catalogue replaces all previous documents.

With the aim to improve our collections, all products included in this catalogue may be replaced and /or modified.
Images are for illustration purposes only and are not legally binding.

INDEX SHOES

PAG.

PAG.

ADAM	S1P CI SRC ESD	RV20076	34
ARIZONA UK	S3 SRC	RR20443	38
BEN	S3 CI SRC ESD	RV20024	34
BERLINO	S1P SRC ESD	RI21126	28
BJORN	S3 SRC	UF20084	39
BRADLEY	S1P SRC ESD	RV20144	35
BREZZA	S1P SRC	RR20196	38
BRUCE	S1P CI SRC ESD	RV20026	34
BULLS	S3 HRO HI SRC	S010213	39
CALGARY UK	S3 SRC	RR70374	38
CANYON UK	S1P SRC ESD	RI20346	32
CARBON	S3 CI SRC ESD	RL20013	27
CLIMB GTX	S3 WR HRO HI CI SRC ESD	GO10064	36
DENVER	S1P SRC ESD	RI21086	28
DOMINATION	RS S3 WR SRC CI	RL1E144	37
DROP GTX	S3 WR HRO HI CI SRC ESD	GO10054	36
EMBER UK	S3 CI SRC ESD	RI20384	33
FACE	S3 CI SRC ESD	RL20144	27
GREENLAND UK	S3 SRC	RR10364	38
HELSINKI UK	S3 CI SRC ESD	RI11014	30
ISLAND UK	S3 CI SRC ESD	RI20334	33
LAND UK	S3 CI SRC ESD	RI10384	33
LINKIN	S3 CI SRC ESD	RL20254	27
LISBONA	S3 CI SRC ESD	RI21074	30
MIAMI	S1P SRC	RR20346	38
MICHELLE	S1P SRC ESD	RV20086	35
MISTRAL	S1P SRC ESD	RI50086	29
MONACO	S3 CI SRC ESD	RI20414	31
MOSKA UK	S3 CI SRC ESD	RI21014	30
NAIROBI	S1P SRC ESD	RI21096	28
NATURAL UK	S3 CI SRC ESD	RI20324	32
NIAGARA UK	S3 CI SRC ESD	RI10324	32
OSLO	S1P SRC ESD	RI21136	29
PANAMA	S3 CI SRC ESD	RI10414	31
PARKER	S3 CI SRC ESD	RV10024	34
POINT	S1P SRC ESD	RL20036	26
QUEBEC UK	S3 SRC	RR20364	38
RAPTOR	S3 CI SRC ESD	RL20376	26
RESPONSE GRIP	S2 SRC	UW20032	40
RIO	S1P SRC ESD	RI21116	29
ROCKET	S3 WR SRC CI	RL2E144	37

SENNA	S1P SRC	UF20206	39
STEGO	S3 CI SRC ESD	RL10376	26
STOCCOLMA	S3 CI SRC ESD	RI11074	30
STRUCTURE	S2 SRC	UW20032	40
THOMAS	S3 CI SRC ESD	RV20134	35
TOKYO	S1P SRC ESD	RI21076	28
VEROK	S1P SRC ESD	RL20216	26
WALTER	S3 WR SRC	UF10064	39
YUKON	S3 SRC	RR20464	38





YOUR DISTRIBUTOR 
Don't worry... be happy!



U GROUP Srl - Via Borgomanero, 50 - 28040 Paruzzaro (NO) ITALY - Tel. +39 0322 53 94 01 - Fax +39 0322 23 00 01
www.u-power.it - info@u-power.it

U - POWER TÜRKİYE

BERK PROKİMYA SAN. TİC. A.Ş

POLİGON MAHALLESİ SARIYER CADESİ
ABC PLAZA N:117/B 34460 İSTİNYE -
İSTANBUL

Tel. : 212 277 33 03

Fax : 212 277 30 36

www.u-power.com.tr info@u-power.com.tr

